

Customizable touch screen user interface to personalize your workflow



Motorized height adjustment with 20-cm travel delivers a flexible ergonomic scanning position



Down lit pull-out keyboard provides flexibility for annotations and data entry



Four active transducer ports so the transducer you need is always ready to use

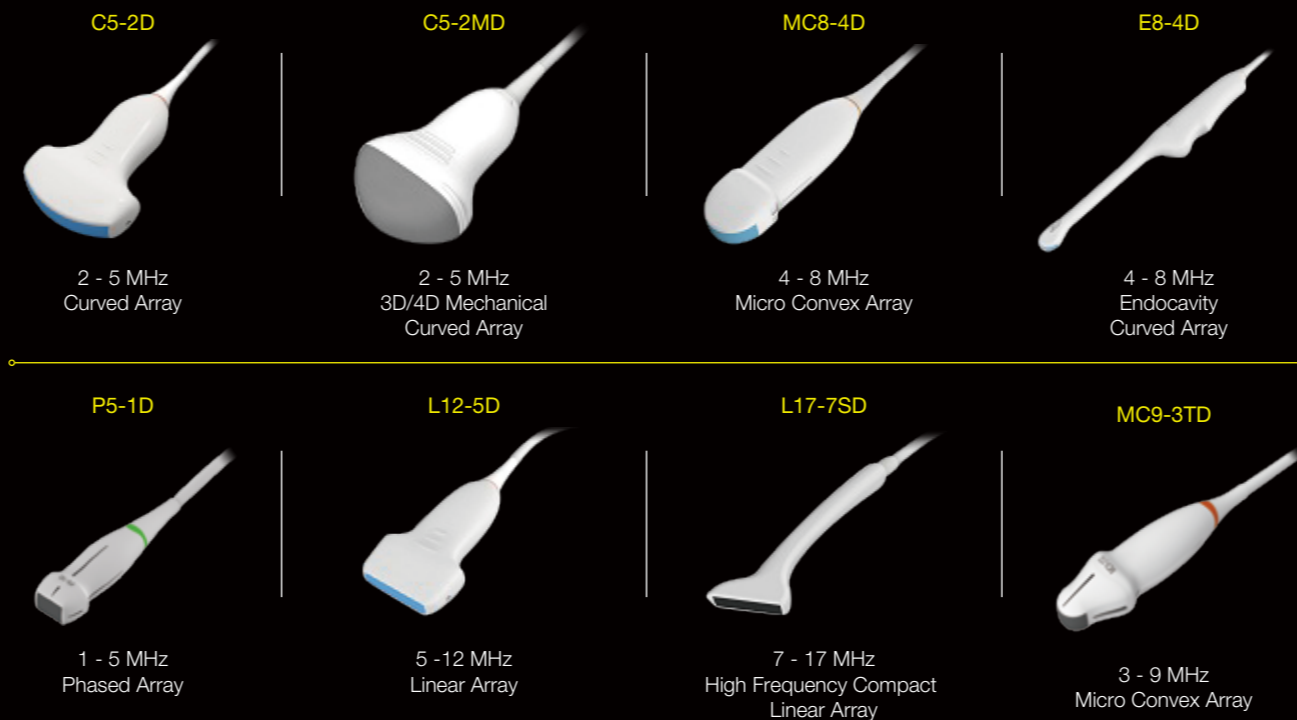


A Clear Vision

Redefine the ultrasound workflow

Born of a vision to deliver meaningful design innovations that benefit the user. The Acclarix LX4 features a host of design breakthroughs that make day-to-day operation easy, fast and intuitive. The result is an elegant simplicity where form and function meet at the tips of your fingers.

Transducers



Rewrite The Standard of Value

Acclarix LX4
Diagnostic Ultrasound System



About Edan

Edan is a healthcare company dedicated to improving the human condition around the world by delivering value-driven, innovative and high-quality medical products and services. For over 20 years, Edan has been pioneering a comprehensive line of medical solutions that address a broad range of healthcare practices including:

- Diagnostic ECG
- Patient Monitoring
- OB/GYN
- Ultrasound Imaging
- Point-of-Care Testing
- *In-Vitro* Diagnostics
- Veterinary

Healthcare professionals around the world depend on Edan's breakthrough medical technologies and outstanding customer support.



Global Headquarters:
Edan Instruments, Inc. | 15 Jinhui Road, Pingshan District, Shenzhen
518122 P.R. China | +86.755.26898326 | www.edan.com | info@edan.com
U.S. and Canada inquiries:
EDAN Diagnostics, Inc. | 9918 Via Pasar, San Diego, CA 92126
+1.858.750.3066 | www.edandiagnosics.com | edan-info@edandiagnosics.com



© Edan Instruments, Inc. All rights reserved. Features and specifications are subject to change without prior notice. No reproduction, copy or transmission may be made without written permission. Not all products or features are available in all countries, contact Edan for local availability.

ENG-US-LX4-V1.0-20200508

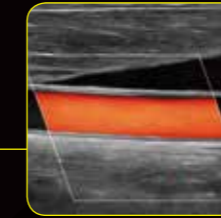




Tissue Adaptive Imaging with the convex transducer delivers exceptional contrast and uniformity even in far field



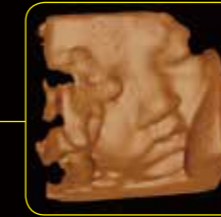
Superb fully filled performance in Color Doppler mode is perfectly demonstrated in this view of the carotid artery



High-performance phased array transducer offering superior detailed and vivid image in real time, greatly feeding daily scanning for cardiology



3D/4D imaging on the LX4 system includes a complete suite of rendering and editing tools ensuring maximum results



Efficiency Within Reach

- 20.5" medical LCD monitor with multi-angle rotation displaying
- 10" high sensitivity touch screen with unique "gesture" control
- Comprehensive departments configuration ideal for clinic daily using
- A cost-effective model offering unexpected performance

Uncompromising Image Performance

The Acclarix LX4 system delivering the brilliant clarity and stunning image quality required for clinic daily diagnostic.

- High fidelity, high-channel count architecture results in superb detail resolution particularly at depth
- Tissue Adaptive Imaging (TAI) continuously and automatically optimizes imaging allowing more focus on the patient
- In B-mode, TAI fine tunes multiple parameters to provide the best possible image quality
- In Doppler, TAI automatically adjusts for flow state providing improved continuity, border detection and fill-in

Concept + Design

Silicon Valley
USA

Design + Manufacture

Shenzhen
China

The Virtue of Value

How can Edan deliver so much innovation and so much value? By capitalizing on the experience and expertise of a truly global enterprise. Acclarix technology is the result of Silicon Valley innovation and engineering excellence combined with Chinese design and manufacturing proficiency. The Acclarix LX4 delivers unmatched value and performance across a broad range of applications:

- Abdomen
- OB/GYN
- Difficult-to-Image

- Cardiac Screening
- Vascular
- Breast

- Small Parts
- MSK
- Nerve