

Transducers and Options

L12-5Q



5 - 12 MHz
Linear Array

L17-7SQ



7 - 17 MHz
High Frequency Compact
Linear Array

C5-2Q



2 - 5 MHz
Curved Linear Array

C5-2MQ



2 - 5 MHz
3D/4D Mechanical
Curved Array

E8-4Q



4 - 8 MHz
Endocavity Curved Array

MC8-4Q



4 - 8 MHz
Micro Convex Array

P5-1Q



1-5 MHz
Phased Array

MC9-3TQ



3 - 9 MHz
Micro Convex Array

MT-809



Trolley System



Multi-transducer
connector option



Sturdy, versatile
travel case

Redefining Value for General Imaging Ultrasound

Acclarix™ AX4
Diagnostic Ultrasound System



Global Headquarters:

Edan Instruments, Inc. | 15 Jinhui Road, Pingshan District, Shenzhen
518122 P.R. China | +86.755.26898326 | www.edan.com | info@edan.com

U.S. and Canada inquiries:

EDAN Diagnostics, Inc. | 9918 Via Pasar, San Diego, CA 92126
+1.858.750.3066 | www.edandiagnostics.com | edan-info@edandiagnostics.com

© Edan Instruments, Inc. All rights reserved. Features and specifications are subject to change without prior notice. No reproduction, copy or transmission may be made without written permission. Not all products or features are available in all countries, contact Edan for local availability.



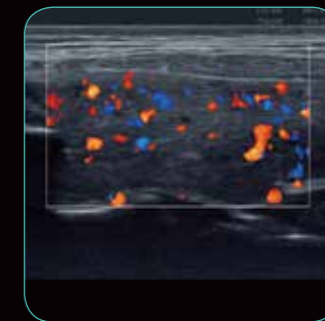
Stunning Clarity

Sleek design and user-friendly features are just part of the story. The Acclarix AX4 is designed to deliver amazing clarity and stunning image quality quickly—eliminating the need to tweak imaging controls.

- High fidelity architecture results in superb resolution
- Tissue Adaptive Imaging (TAI) continuously and automatically optimizes imaging allowing more focus on the patient
 - In B-mode, TAI fine tunes multiple parameters to provide the best possible image quality
 - In Doppler, TAI automatically adjusts for flow state providing improved continuity, border detection and fill-in



This fluid collection on the anterolateral aspect of the knee is clearly defined with the L12-5Q transducer.



TAI for color Doppler enhances flow sensitivity and spatial resolution as demonstrated with this thyroid.



The C5-2Q transducer delivers exceptional color and spectral Doppler sensitivity visualizing the left hepatic vein.



The 3D/4D feature enables fast and easy acquisition for outstanding fetal face detail.

It's a Tour de Force

Redefining innovation through value and performance

Introducing a new price performance standard for ultrasound. The remarkable Acclarix AX4 Compact Ultrasound System delivers a combination of imaging performance and ease-of-use to meet the specific demands of general imaging ultrasound. The Acclarix AX4 has been designed from with a relentless focus on delivering unexpected levels of performance at an attractive price.

- Definitive Imaging
- Distinctive Design
- Intelligent Workflow
- Intrinsic Quality

The Virtue of Value

The Acclarix AX4 delivers unmatched value and performance across a broad range of applications.

- Abdomen
- Breast
- Prostate
- Difficult-to Image
- OB/GYN
- Nerve
- Vascular
- Musculoskeletal
- Cardiac Screening
- Small Parts
- Intraoperative

Distinctive Design



Sleek compact design fits into any environment



Tilt-and-swivel monitor for optimal viewing



Customizable control panel to personalize your user interface



Completely sealed control panel to simplify clean-up