

Company Profile

Since its establishment, SonoScape has been committed to providing high quality medical equipment for the healthcare sector. SonoScape specializes in the development and production of diagnostic ultrasound solutions. By introducing advanced imaging techniques, SonoScape has improved diagnostic accuracy and therefore enabled better health outcomes. Since 2002, SonoScape has reached and benefited millions of people. With the world in mind, SonoScape will continue providing more effective and accessible healthcare solutions, through persistent innovation and passion for life.

Quote from the Analyst of

"The Frost & Sullivan Award for Growth Leadership is presented to the company that has demonstrated excellence in capturing the highest annual compound growth rate for the last 3 years...The sales of ultrasound devices contribute an overwhelming proportion of total revenue, helping the company strengthen its leading position to outperform the competitors in the marketplace. With increasing penetration of mid-to high-end ultrasound devices, SonoScape is expected to see significant growth potential in the future... "

Company Milestone

- 2002: Company Founded in Shenzhen, China
- 2003: Released SSI-1000: the 1st 15" Portable Color Doppler system in China
- 2004: Released SSI-2000: the 1st PC platform Color Doppler system in China
- 2005: Received the "High Technology Company" award from the PRC government
- 2007: Received "CHINA TOP BRAND" award in the Medical Equipment Industry
- 2007: Released the 1st Real time 4D ultrasound system in China
- 2008: Received "European Entrepreneurial Company 2008" award from FROST & SULLIVAN
- 2008: Received "Flagship Company" award in the Medical Equipment Industry in China
- 2009: Received "Product Quality Leadership Award 2009" from FROST & SULLIVAN
- 2011: Received the Reddot 2011 Product Design Award for S20 in Essen, Germany
- 2013: Received "Ultrasound Market Growth Leadership Award, 2013" from FROST & SULLIVAN
- 2014: Received the iF Product Design Award 2014 for S9 in Munich, Germany



SonoScape

Yizhe Building, Yuquan Road, Shenzhen, 518051, China
Tel: 86-755-26722890 Fax: 86-755-26722850
E-mail: market@sonoscape.net www.sonoscape.com

Xcelsitas
Smart Medical Technologies

Authorized Distributor Leipziger Platz 8, 10117 Berlin
Tel: 49-30-555789950 Fax: 49-30-555789951
E-mail: info@xcelsitas.com www.xcelsitas.com





Sonoscape

Caring for Life through

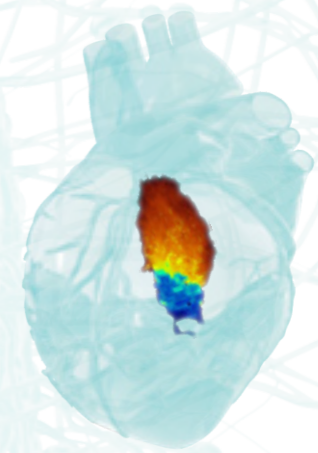
Innovation



The system looks sleek from the outside, but it's what's inside that you'll value most. Powered by SonoScape's state-of-the-art ultrasound technology, the S40 is our latest premium ultrasound system. The S40 showcases our best technologies and design through its ergonomics, precision, and exceptional image quality.

Style and Performance **S40**

- 19-inch high definition LCD monitor with wide viewing angle
- 10-inch touch screen
- Height and position adjustable control panel
- Five transducer sockets and additional one socket for CW probe
- Additional endocavity probe holder and gel warmer
- A comprehensive selection of probes: Linear, Convex, Micro-convex, Endocavity, High-density Phased Array, Intraoperative, TEE, Bi-plane, Pencil, Volumetric, Endocavity 4D and Laparoscope probe
- Premium application technology: μ -scan speckle reduction, compound imaging, TDI, stress echo, C-Xlasto elastography and contrast imaging
- Full patient database and image management solutions: DICOM 3.0, AVI/JPG, USB2.0, HDD, DVD, PDF report





The S9 features the most innovative user-interface and design of all compact ultrasounds on the market. With a full touchscreen interface, the S9 is our most versatile and elegant premium portable ultrasound system. The elegant touchscreen is responsive, ergonomic, and the only one of its kind. The SonoScape S9 provides premium cardiovascular imaging, as well as premium images for nearly every other modality.



Feel the Difference **S9**

- 15-inch LCD with 50° adjustable angle
- Elegant 13.3-inch touch screen user interface
- Two pinless transducer sockets
- A comprehensive selection of probes: Linear, Convex, Micro-convex, Endocavity, High-density Phased, Intraoperative, TEE, Bi-plane, Pencil, Volumetric, Endocavity 4D and Laparoscope probe
- Premium application technology: μ -scan speckle reduction, compound imaging, TDI, stress echo, C-Xlasto elastography, contrast imaging
- Full patient database and image management solutions: DICOM 3.0, AVI/JPG, USB2.0, HDD, PDF report
- Removable Built-in battery with 90 minutes scanning capability
- Stylish trolley with adjustable height
- Maneuverable remote controller

S8 Exp is borne from our relentless efforts to be the most innovative ultrasound manufacturer in the world. This compact, portable ultrasound system is excellent for nearly every clinical situation, including cardiology, abdominal, OB/GYN, small parts, urology and so on. The S8 Exp provides a premium, efficient portable ultrasound solution with performance and style.

S8 EXP

- 15-inch LCD with 50° adjustable angle
- Two pinless transducer sockets
- A broad range of transducers: Linear, Convex, Micro-convex, Endocavity, Phased, Intraoperative, TEE, Bi-plane, Pencil, Volumetric and Endocavity 4D probe
- Speckle reduction and compound imaging technologies
- Advanced application technology: 4D, real-time panoramic, triplex, IMT, color M-Mode, steer M-Mode, TEI index, TDI and stress echo
- Full patient database and image management solutions: DICOM 3.0, AVI/JPG, USB2.0, HDD, PDF report
- Removable Built-in battery with 90 minutes scanning capability
- Stylish trolley with adjustable height

S30

- 19-inch high definition LCD monitor with wide viewing angle
- 10-inch touch screen
- Height adjustable control panel
- Four transducer sockets and additional one socket for CW probe
- A broad range of transducers: Linear, Convex, Micro-convex, Endocavity, Phased, Intraoperative, TEE, Bi-plane, Pencil, Volumetric and Endocavity 4D probe
- Speckle reduction and compound imaging technologies
- Excellent application technology: 4D, real-time panoramic, triplex, IMT, color M-Mode, steer M-Mode, TEI Index, TDI and stress echo
- Full patient database and image management solutions: DICOM 3.0, AVI/JPG, USB2.0, HDD, DVD, PDF report

Based on the latest powerful platform, the S30 combines SonoScape's core imaging technologies and gorgeous ergonomic design. The S30 is built as a complete full-body ultrasound machine that has more features than any other in its class, and even can satisfy the most demanding clinical requirements, significantly expanding the value of ultrasound.



Outstanding Value **SSI-8000**

- 17-inch high definition LCD monitor with large ultrasound imaging area
- Speckle reduction imaging and compound imaging technologies
- Cardiovascular analysis kits: stress echo, TDI, steer M-Mode, color M-Mode, CW, HPRF, panoramic imaging
- Full range of cardiovascular transducers: Adult TEE, Pediatric TEE, Phased, and high-frequency linear probe
- Full patient database and image management solutions: DICOM 3.0, AVI/JPG, USB2.0, HDD, DVD, PDF report



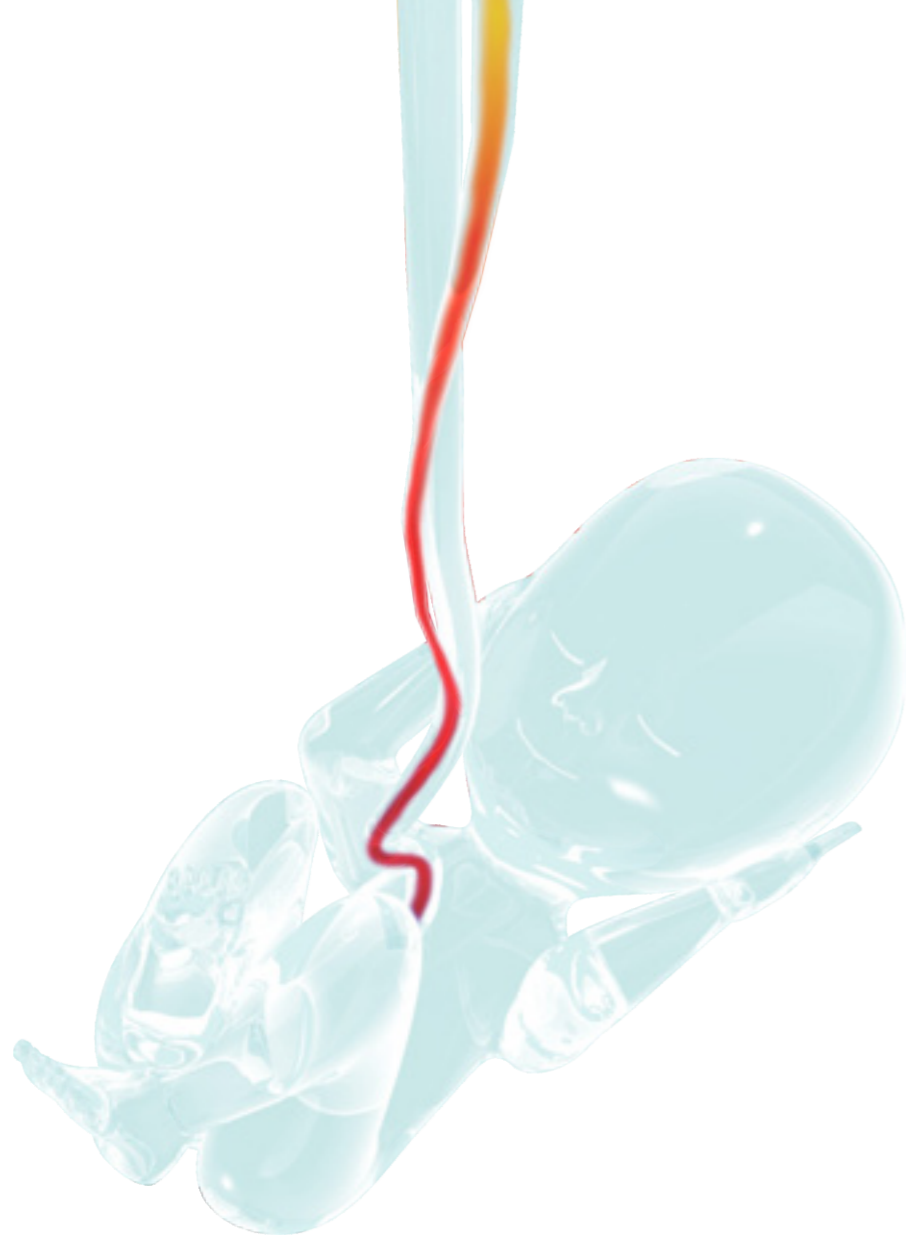
Featuring a full range of clinical software packages, the SSI-8000 delivers advanced technologies and high resolution images that make the SSI-8000 the best value in its class. With superior technologies such as compound imaging, speckle reduction, full cardiac package, and 4D OB/GYN imaging, the SSI-8000 provides a complete solution and a fast return on your investment. SSI-8000 supports a series of high-density probes, including cardiovascular transducers, such as adult TEE, pediatric TEE, high frequency phased array and 15 MHz linear. Additionally, it includes advanced software packages, such as cardiovascular analysis kits, stress echo, and full patient database and image storage solutions.



The S8 sets a new standard for performance, value, and image quality in the color Doppler hand carried ultrasound market. Its performance and features are equal to many expensive cart-based systems and includes standard advanced imaging configurations including: TEE, high frequency phased array and linear transducers, obstetric 4D, and more.

The new standard for HCU **S8**

- 15-inch LCD monitor with large imaging area
- Two active transducer sockets
- Speckle reduction imaging and compound imaging technologies
- Integrated advanced imaging technologies: 4D, IMT, B-Steer, automatic flow volume analysis, panoramic imaging and more
- Full patient database and image management solutions: DICOM 3.0, AVI/JPG, USB2.0, HDD, PDF report
- Built-in high capacity Li-ion battery



Intelligent Design and Efficiency **S20**

- 17-inch high definition LCD monitor with large imaging area
- Ergonomic design with touch screen
- Four transducer sockets and a wide selection of transducers: Convex, Phased, Linear, Transvaginal, Transrectal, Bi-plane, TEE, Intraoperative and Volumetric probe
- High density transducers with frequencies ranging from 1.9 to 16 MHz
- 200° transvaginal imaging with temperature-detection technology
- Integrated with advanced technologies, such as μ -scan speckle reduction, compound imaging, IMT, B-Steer, automatic flow volume analysis, and real-time 4D imaging
- Shared Services full suite of applications, including: Cardiology, Radiology, OB/GYN, Urology, Vascular, Small Parts, MSK, and more
- Full patient database and image management solutions: DICOM 3.0, AVI/JPG, USB2.0, HDD, DVD, PDF report



reddot design award
winner 2011



The S20 brings advanced ergonomics, technology, and a full suite of applications into a price-range that won't break your budget. The elegant S20 is specially designed for all modalities, including radiology, cardiovascular, OB/GYN, vascular, MSK, small parts, and more. This system is featured with a smart touchscreen, high-end imaging technologies, and an efficient workflow. Thanks to our innovative technologies, such as Multi-beam processing and μ -scan speckle reduction, clinicians will be confident for even toughest patients.

SSI-6000

Great Value for All Applications

The SSI-6000 is SonoScape's mid-range color Doppler system that delivers the best value in full-body imaging. With superior 2D image quality and color sensitivity, the SSI-6000 leads the mid-range category with the best technologies, including μ -scan speckle reduction, tissue Doppler, 3D and optional 4D.

- 17-inch high resolution LCD monitor
- Wide choice of transducers: Convex, Phased, Linear, Transvaginal, Transrectal, Bi-plane and Intraoperative probe
- 200° field of view with temperature-detection technology for transvaginal transducers
- Real time 4D imaging function as option, Standard freehand 3D imaging compatible with all transducers
- μ -scan speckle reduction technology, tissue harmonic imaging, TDI and M-Tuning one-touch optimization
- Full patient database and image management solutions: DICOM 3.0, AVI/JPG, USB 2.0, HDD, DVD, PDF report

The SSI-4000 color Doppler system provides a broad range of clinical solutions, including abdominal, OB/GYN, cardiology, vascular, small part and more. It fits in both clinic and hospital working environments, with a wide range of transducers and software packages. In short, this system is cost-effective and offers lot of options for a small price.

SSI-4000

- 15-inch high resolution monitor
- Wide field of view transvaginal probe with temperature-detection technology
- Freehand 3D imaging
- Full patient database and image management solutions: DICOM 3.0, AVI/JPG, USB2.0, HDD, DVD, PDF report



S6 is a mid-range shared service portable color Doppler system suitable for nearly every clinical need. SonoScape developed this system to service a broad range of clinical applications such as Radiology, OB/GYN, Urology, cardiology, etc. With the help of powerful software packages and professional transducers, the S6 offers tremendous value for every clinician. With its built-in battery, the S6 makes it possible for you to service your patients anywhere at any time.

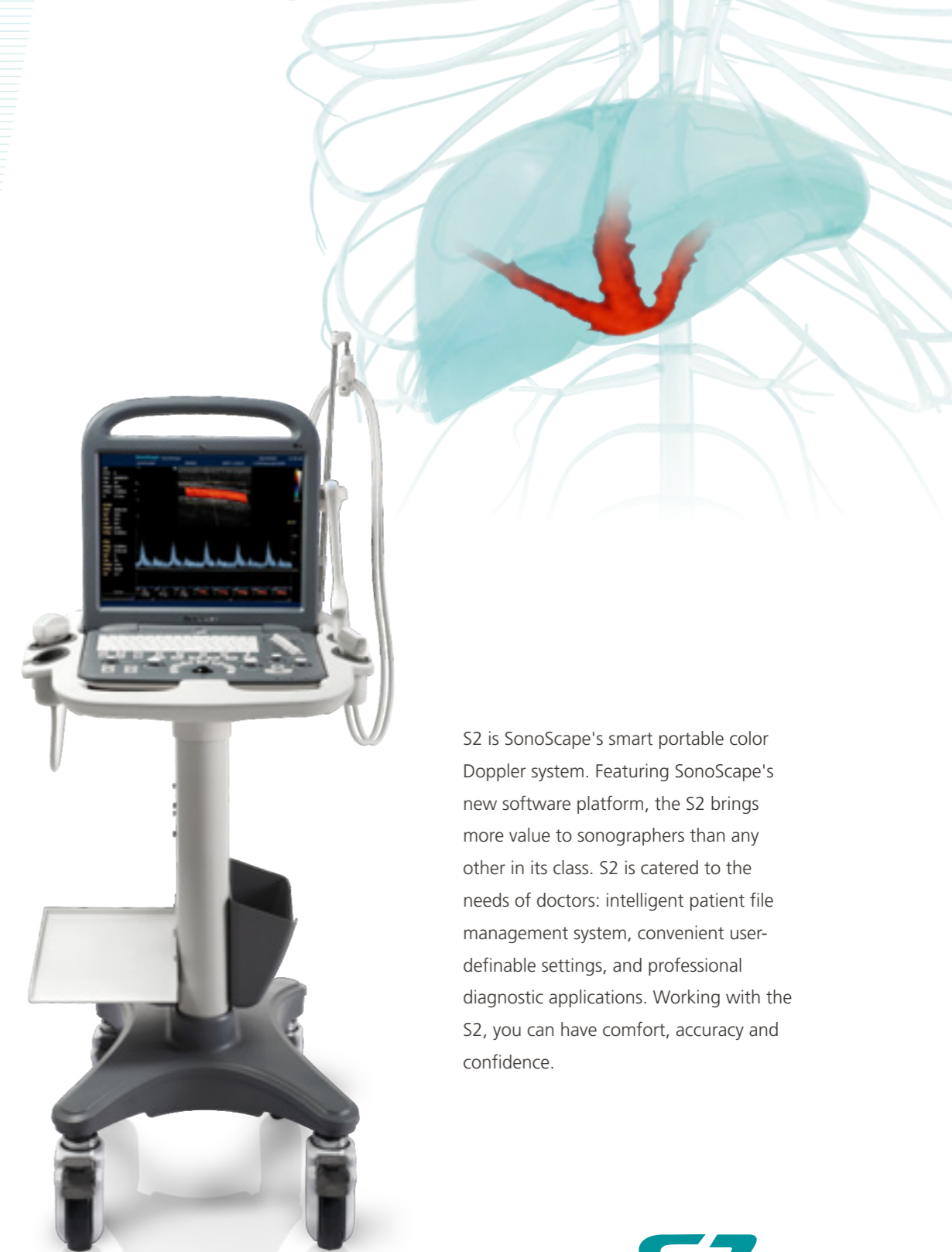
The Best Value in Portable Ultrasound **S6**

- 15-inch high definition LCD monitor
- Two standard transducer sockets
- Shared Services: 2D, Color Doppler, Power Doppler, PW/CW, HPRF
- μ -scan speckle reduction technology, compound imaging, tissue harmonic imaging
- Full patient database and image management solutions: DICOM 3.0, AVI/JPG, USB2.0, HDD, PDF report
- Built-in high capacity Li-ion battery

Beyond your Expectations **S11**

- 15-inch high definition LCD monitor with articulating arm
- Compact and agile trolley design
- Three active transducer sockets available for a wide range of applications
- Duplex, Color Doppler, DPI, PW Doppler, tissue harmonic imaging, μ -scan speckle reduction imaging, compound imaging, trapezoidal imaging
- Customized settings based on your own working style
- Full patient database and image management solutions: DICOM 3.0, AVI/JPG, USB 2.0, HDD, DVD and PDF report

SonoScape's trolley color Doppler system S11 redefines price and performance with practical design. The S11 will go beyond your expectations but not your budget. As an easy-to-use ultrasound system, the S11 is integrated with a new software platform especially optimized for smooth workflow and convenient operation. The system will speed up the exam process and make file management much easier.



S2 is SonoScape's smart portable color Doppler system. Featuring SonoScape's new software platform, the S2 brings more value to sonographers than any other in its class. S2 is catered to the needs of doctors: intelligent patient file management system, convenient user-definable settings, and professional diagnostic applications. Working with the S2, you can have comfort, accuracy and confidence.

Smart Color System **S2**

- 15-inch high definition LCD monitor
- Two active transducer sockets
- Duplex, Color Doppler, DPI, PW Doppler, tissue harmonic imaging, μ -scan speckle reduction imaging, compound imaging, trapezoidal imaging
- New patient file management for fast and efficient workflow
- Full patient database and image management solutions: DICOM 3.0, AVI/JPG, USB 2.0, HDD and PDF report
- Built-in battery supports 1-hour scanning capability

SSI-5500BW

Advance B&W Doppler System

- High definition 15 inch LCD monitor with articulating arm
- Standard three active transducer sockets
- PW/HRPF support
- Tissue harmonic imaging, μ -scan speckle reduction imaging, compound imaging, trapezoidal imaging
- Full patient database and image management solutions: DICOM 3.0, AVI/JPG, USB 2.0, 320GB HDD, DVD, PDF report



The high-end SSI-5500BW is integrated with full clinical applications. It is one of few black-and-white ultrasounds to feature the PW/HRPF function. The application fields of SSI-5500BW have been expanded beyond other B&W systems because of the diagnostic capability of hemodynamics. The SSI-5500BW also performs a wide variety of clinical applications, such as Abdominal, Radiology, OB/GYN, Vascular, Small parts and more.



The S6BW is designed to be an easy-to-use yet feature-rich portable ultrasound system. It fulfills the traditional application work, as well as emerging applications such as anesthesia, ICU and emergency. Clinicians will have more confidence than ever before based on both the high definition 2D image quality and the optional color Doppler kit of S6BW.

S6BW

High-end B&W HCU with Color Upgradeable

- High definition 15 inch LCD monitor
- Standard two active transducer sockets
- Wide choice of transducers: Convex, Phased, Linear, Transvaginal, Transrectal, Bi-plane, Intraoperative
- PW/HRPF support
- Tissue harmonic imaging, μ -scan speckle reduction imaging, compound imaging, trapezoidal imaging
- Full patient database and image management solutions: DICOM 3.0, AVI/JPG, USB 2.0, PDF report
- Built-in high capacity Li-ion battery
- Upgradeable to color Doppler system

Powerful, Efficient, High Value **S11BW**

- High definition 15-inch LCD monitor with articulating arm
- Standard three active transducer sockets
- PW/HPRF support
- Tissue harmonic Imaging, trapezoidal imaging, μ -scan speckle reduction imaging, compound imaging
- Full patient database and image management solutions: DICOM 3.0, AVI/JPG, USB 2.0, HDD, DVD, PDF report



S11BW is integrated with the SonoScape's latest software platform specially optimized for smooth workflow and convenient operation. It is a slim unit capable of various functions and creates a new definition of price-performance. Based on the updated software architecture, S11BW offers a broad range of application packages and can be individualized to every user's specific needs, including Abdomen, OB/GYN, Vascular, Thyroid, Breast, Urology, Musculoskeletal and Small parts. S11BW can also be upgraded to color Doppler system to satisfy further clinical needs.



S2BW is a compact portable black and white ultrasound unit which can be upgraded to a comprehensive color Doppler system. Equipped with SonoScape's core imaging technologies like speckle reduction, spatial compound and tissue harmonic imaging, S2BW's image quality is truly exceptional for a system in its class. It is catered to the needs of doctors: intelligent patient file management system, convenient user-definable settings, and professional diagnostic applications. Combined with ergonomic portable design, S2BW can be ready at anytime and anywhere.

Distinguished B&W Performance **S2BW**

- High definition 15-inch LCD monitor
- Standard two active transducer sockets
- PW/HPRF support
- Tissue harmonic imaging, trapezoidal imaging, μ -scan speckle reduction imaging, compound imaging
- Full patient database and image management solutions: DICOM 3.0, AVI/JPG, USB 2.0, HDD, PDF report





A8 is SonoScape's cart-based, cost-effective digital BW ultrasound system. The compact and agile cart design is ergonomic and user-friendly. The A8 is also featured with high definition image quality, easy data management system and a full range of clinical applications.

Great Performance at an Affordable Price

A8

- High definition 15-inch LCD monitor with chroma function
- Compact cart design with articulating arm
- Intuitive operation with M-Tuning one-key image optimization
- Clip-board function for quick patient image capture and review
- Full patient database and image management solutions: AVI/JPG, USB 2.0, HDD, PDF report



A6 is a fully digital Black-and-white portable system weighing 6kg and is integrated with advanced ergonomic design to make it user-friendly and efficient. Among the best imaging black and white portable ultrasound machines, A6 is a great budget choice for general imaging, abdominal, OB/GYN, small parts, and emerging applications like ICU, emergency, anesthesia, MSK, and so on.

Ultimate Performance, Like Nothing Else

A6

- Adjustable 12-inch LCD monitor with chroma function
- Standard two active transducer sockets
- Multi-frequency transducers
- Tissue harmonic imaging, clip-board function and more
- Built-in high capacity Li-ion battery (optional)
- Convertible with trolley



- Adjustable 12-inch LCD monitor
- Standard two active transducer sockets
- Less than 6kg
- Convertible with trolley
- Built-in high capacity Li-ion battery (optional)

A5

The A5 is a fully digital HCU B/W system, with unique user-friendly design and two active transducer connectors. The A5 provides a wide range of patient data solutions. The A5 is durable and powerful, it can support daily application usage for a wide variety of applications.